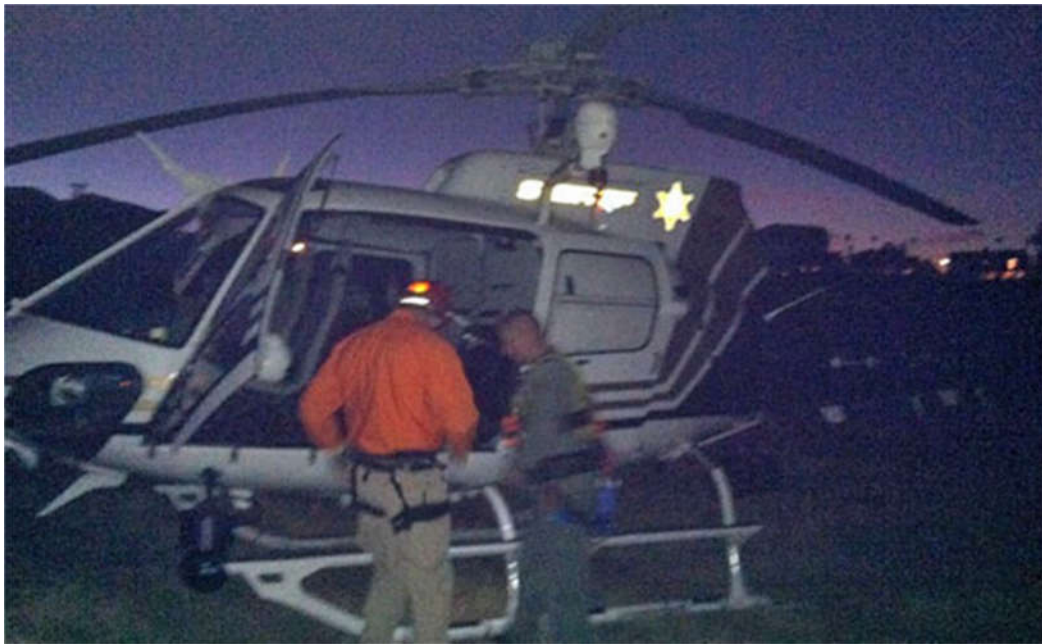


Three Person Hoist

**November 08, 2014
Cleveland Nation Forest Skyline Road
2014-043**

Written by Dana Potts

Three teens from the Corona area had hiked up to the Main Divide from the Skyline trail area in Corona. After coming down the wrong ridge line on their way back to the road, they became disorientated in the high foliage. As darkness came, they called 9-1-1 to report their situation. 9-1-1 dispatchers from RSO asked Riverside PD to use their helicopter to locate the three teens before the sun set completely.



**Dana and TFO getting read for hoist
Photo by Unknown.**

Once Riverside PD located the three, they stayed on scene until RSO could arrive. As I live in the Corona area RSO picked me up in a field near my home. I was lowered 50' down into the thick brush. All three were in good health, dressed appropriately and had flashlights to assist the air unit in locating them. All three were given a helmet and hoisted up to the RSO airship without incident.

When the three were safely returned to the trail head, RSO was notified of another possibly mission on Mount San Jacinto.

RMRU Members Involved: Dana Potts.

RMRU is a volunteer search and rescue team that covers Riverside County and assists other teams with search and rescue efforts in other counties. Each member purchases their own equipment and takes time off work, without compensation, to participate in search and rescue missions. Team equipment is purchased from contributions from the community. We are a non-profit organization and are funded by [donations](#) from people like you.