

Volume XX, Issue IV, April 1984

John Dew, Editor — Kevin Walker, Publisher — Dona Towell, Artist

Search and Rescue

SEARCH

Mission No. 8406M

14 April., Sat.
Dark Canyon near Camp Lawler
San Jacinto Mountains

By Jim Fairchild



After RMRU member Dave Ezell's marriage to Sandy up in Fern Valley, wife JoAnne and daughter Carol and myself were looking at the exhibits in the Riverside County Park Visitor Center. The pager activated and said to call Walt Walker. In an attempt to use the phone at the Visitor Center I learned from the ranger on duty that she had for some hours known of a search for two eleven-year-old girls in the Camp Lawler area. Interesting, to say the least. Upon reaching Walt this was verified, and the three of us were soon at the camp attempting to gather pertinent information on which a search could be launched.

At long last Dave Weakley, a sergeant with the Hemet Sheriff Station, appeared back at the camp. He had been out searching. His daughter was attending the camping session, but was not one of the missing. It turned out that two girls at camp had been with the missing ones and had seen them last. They were recruited to guide me to that spot (Point Last Seen — PLS) to see if any definitive tracks were to be found. We spent half an hour on that enterprise, then returned to base with little more than some chevron prints having been located. Just before reaching the vans which were now present, a radio message saying the girls had hiked up to Pine Cove came through. We waited for

them to be returned to camp, then returned to our original activities, grateful for the well-being of the missing. Dark Canyon has been the location of many missions in the past, and is sure to be in the future. • RMRU



Technical & Family Cookout

6-8 April, Fri.-Sun.

Lost Horse Camp,
Joshua Tree National Monument

By Glenn Henderson

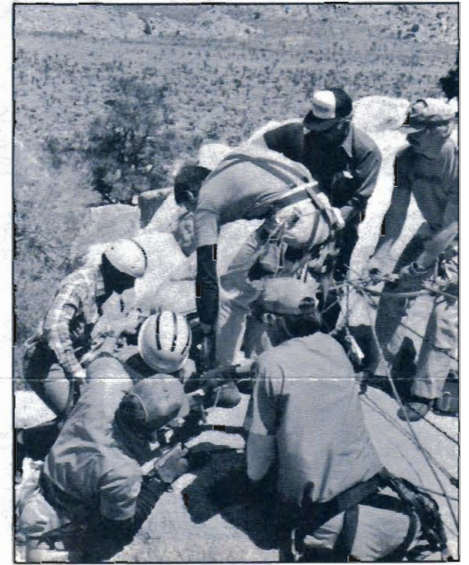


Our annual technical training and family campout was held at Joshua Tree National Monument. As I couldn't leave work early I let Kevin take my family and his to Joshua Tree, pulling my new trailer with my Bronco. "What a thrill" he is reported to have said. The real thrill for me was when we dropped my trailer on the ground trying to set it up.

Saturday morning dawned clear and warm. Another beautiful day in Joshua Tree. We started out with lessons on litter rigging, chock placement, and setting up raises and lowers. We then had a demonstration by Jim Fairchild on how little effort it takes to cut goldline or sling material when it is under a lot of tension by stretching the rope between a rock and a car.

After a break for lunch we split into two groups and each practiced raises and lowers, plus personal skills in jumaring and rappelling.

After breaking for dinner the usual challenges were tossed back and forth — "Well I can climb that," "Well I can climb it with no hands," "Well I can climb it with one foot," "Well I can fly," etc. etc. etc.



RMRU PHOTO BY JIM FAIRCHILD

BACK ON TOP — RMRU member Rob Gardner with his patient Bill Blaschko on board is greeted by swarm of fellow members as the litter is raised up and over the edge of the face.

Sunday morning another beautiful day. Randy Iwasiuk, Cameron Robbins and Craig Britton sneaked out of camp to set up a new route south of camp, which Cam led and did do, but suddenly a major fall with one climber seriously injured and one with major rope burned hands. A set up of course but to be treated as a real mission. Most of the morning was spent solving this problem which turned out to be quite hard due to the inaccessible area they had climbed to, to stage their accident.

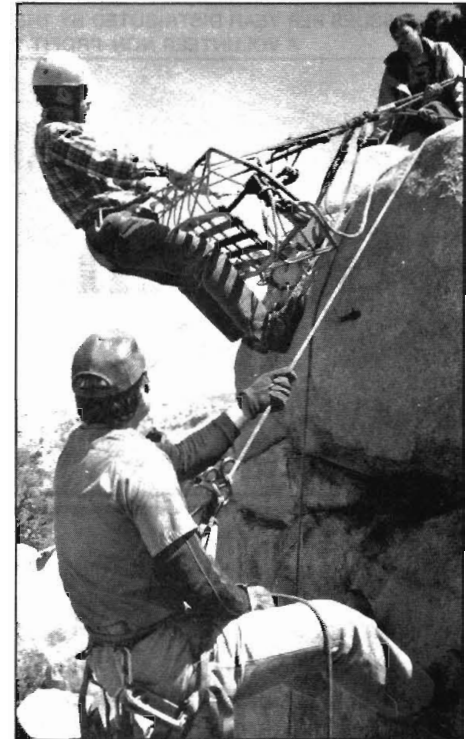
After much problem solving we did finally get them down safely. We then broke camp and everyone headed home, hopefully with everyone learning something new through training.

Again we say a great thank you to the rangers at Joshua Tree for allowing us to use their campground. It was greatly appreciated by all that attended this training. Thanks again. • RMRU



RMRU PHOTO BY JIM FAIRCHILD

STARTING DOWN — RMRU members Joe Erickson and Kevin Walker help ease the litter over the side, as Bill Blaschko takes the helm with serious mock injured Craig Britton inside the wire basket



RMRU PHOTO BY JIM FAIRCHILD

TRUST ME ROB — RMRU member Kevin Walker coaxes Rob Gardner over the side, as Cameron Robbins watches from above. Below them is fellow member Bill Blaschko (out of photo) stranded on the 75 foot vertical face.



RMRU PHOTO BY JIM FAIRCHILD

FAMILY GATHERING — RMRU members and their families take a break from the rigorous training exercises in the morning to enjoy lunch at the Lost Horse Campground