

RMRU

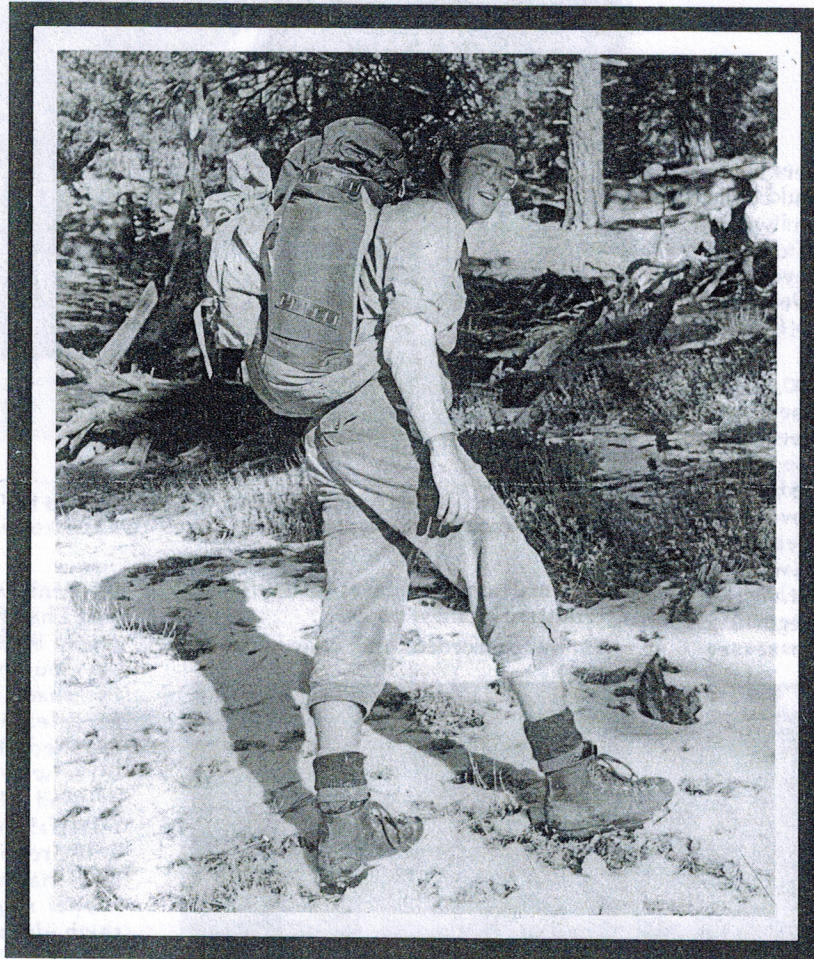
RIVERSIDE MOUNTAIN RESCUE UNIT

NEWSLETTER

12 ISSUES PER YEAR DISTRIBUTED BY THE RIVERSIDE MOUNTAIN RESCUE UNIT, INC. — POST OFFICE BOX 5444, RIVERSIDE, CALIFORNIA 92517
A VOLUNTEER NON-PROFIT TAX DEDUCTIBLE CORPORATION — MEMBER OF THE MOUNTAIN RESCUE ASSOCIATION

Volume XVIII, Issue VI, June 1982

Kevin Walker, Editor — Walt Walker, Publisher — Carolyn Parsons, Artist



Steve Jensen

It has been said, and probably rightly so, that mountaineers are a different breed of men. They all seem to be drawn to the mountain tops at the expense of a good deal of exertion and discomfort much of the time.

Steve Jensen was a mountaineer who loved the mountains. While a member of RMRU he had one summer climbed to the top of Mt. McKinley. He was not a member of the team for a long time, but he became the friend of many during the time he was here. Upon completing his graduate work at UCR he accepted a position at the Bureau of Standards in the east.

RMRU members were numbed when we learned, that just a few weeks ago, that Steve was killed in an avalanche while climbing Mt. Logan. We all mourn the passing of a friend and fellow mountaineer.

Training

FAMILIARIZATION

**5-6 June, Sat.-Sun.
Deep Canyon,
Santa Rosa Mountains**

By Craig Beasley

For many of the team members along on this month's training it would be old hat. On the contrary, for me it would be new for I missed the team's descent of Deep Canyon last year. For a year now I have heard how spectacular Deep Canyon was. Well, I was about to find out for myself.

RMRU members met at 8:00 a.m. at the fire station across from the Sugarloaf Cafe on Highway 74. Leaving our cars (and motorcycle) at the fire station, we donned our packs and headed east on Highway 74 to the place where we would descend into Deep Canyon. After a steep descent and a couple of bouts with the ever present Cholla, we reached the bottom of the canyon. The beginning of the canyon is wide and possesses



RMRU PHOTO BY JIM FAIRCHILD

FRICTION - RMRU members Craig Beasley and Ed Hill make their way down one of the many rock friction slopes in Deep Canyon. Walt Walker is seen at the bottom moving on.

only a small amount of water that forms intermittent shallow pools.

As we proceeded, the canyon walls

steepened and began to fulfill the images that I had created about what the canyon would be like. It was a beautiful, sunny day, but not overly hot. Nonetheless, the shade from the canyon walls made for pleasant hiking. Before long we reached the first obstacle — one of three waterfalls that we would have to descend. Rappelling this and the other waterfalls was made easy by bolts placed in the rock by Bernie McIlvoy and Training Chairman, Joe Erickson. This first rappel required entering into a mid-thigh deep pool at the bottom of the waterfall. Not quite a pool like those I had been told about, but there was more to come.

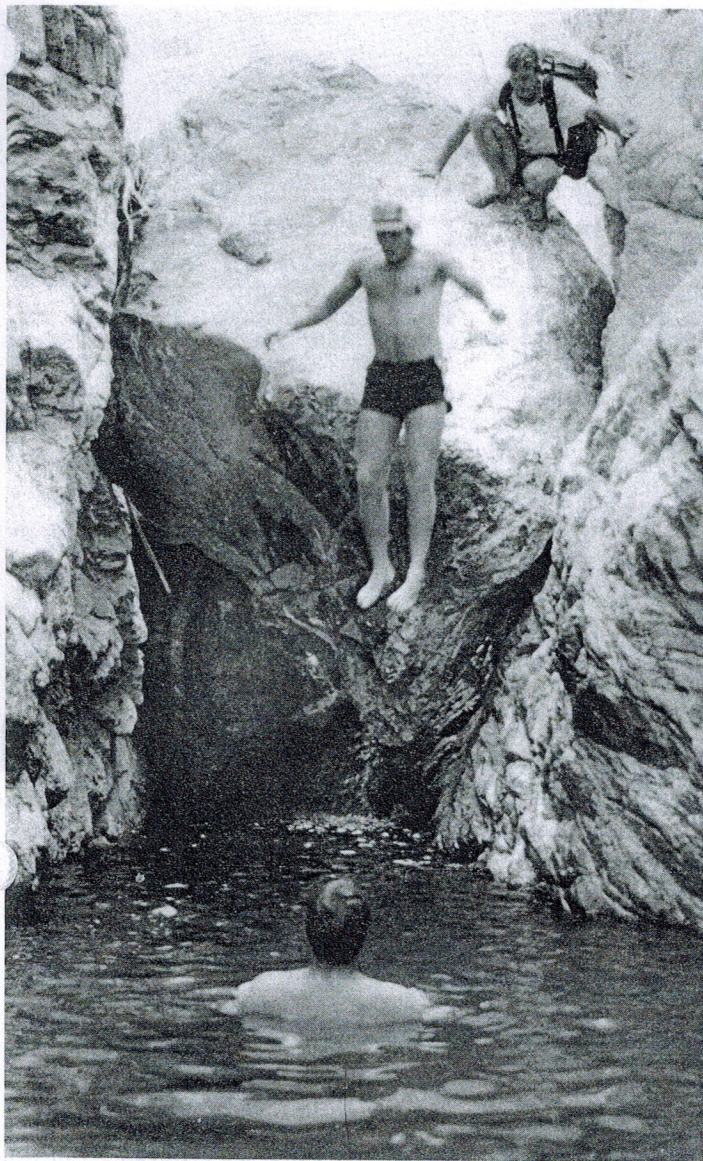
On down the canyon the walls grew and continued to steepen. After negotiating a few routine moves we arrived at the second major obstacle — another waterfall. This waterfall is taller than the first and requires entering a pool that is over my head (I'm 6'1" tall). To keep us dry and to give us added buoyancy we had placed everything in large trash bags which went in our packs. This method of water-proofing worked better for some than for others.

Since we were making good time we figured we might as well descend all of the waterfalls on Saturday. However, prior to the third waterfall came the narrow stretch of canyon that requires



RMRU PHOTO BY JIM FAIRCHILD

CHECK THIS OUT CRAIG - RMRU member Joe Erickson starts a rappel down past the first of three waterfalls that required ropes and sit harnesses as Craig Beasley looks on.



RMRU PHOTO BY JIM FAIRCHILD

JUMP - RMRU member Craig Beasley descends into a narrow but quite deep pool as Kevin Walker (treading water) and Joe Erickson look on. At this point in the canyon the walls were not more than ten feet apart.

a nice little leap into a pool that spans the width of the canyon (about 8 feet). Finally, the third waterfall was in front of us. It looks like an ordinary rappel from the top, but once about one third of the way down you enter a world of water and soft green moss. A nice pool lies at the bottom of the waterfall to complete the picture. Alas, Deep Canyon is as spectacular as I had been told.

We camped shortly after passing the last waterfall. A flat, sandy area large enough to sleep all of us was nowhere to be found so we scattered about along a stretch of the creek. Festivities of the evening included a few stories and a few creek-cooled beers. With the beer all gone and drowsiness setting in, we headed off to our respective places for a pleasant bivouac.

Morning came and so did the sun. With breakfast over, gear was packed up and we headed down canyon. It was a warm morning and the thought of swimming was entering our minds shortly out of camp. Not too far into morning, we arrived at the ultimate pool with built in high dives. It was off with the packs and boots and into the water. Various heights of jumping and diving were tried; however, Mark Rhoads wins the prize for "sky" diving from 34' (it was later measured). Until our pool in Tahquitz Canyon clears out, we may have found a replacement.

On down the canyon were many other good swimming holes but we somehow managed to stay out of them and continue on with training. We reached the care-



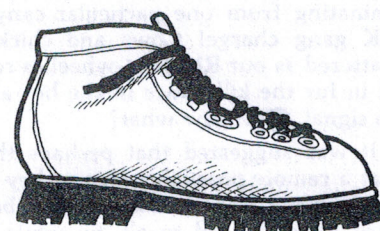
RMRU PHOTO BY JIM FAIRCHILD

BEAUTIFUL RAPPEL - RMRU member Mark Hebert (arrow pointing to) lowers himself down the largest of the Deep Canyon waterfalls, as Kevin Walker, Mel Krug and Mark Rhoads wait for their turn at the top.

taker's hut at the mouth of the canyon in the late morning. Some of the members had shuttled cars to the caretaker's hut, and so began the chore of getting everybody back to their transportation.

Special thanks go out to the caretakers at the USC Research Facility for their permission to use the canyon and to make this excellent training possible.

• RMRU



Search and Rescue

SEARCH

Mission No. 8218M

**1 June, Tues.
Banning Pass**

By Rick Pohlers

The presses at Arrow Printing were humming along smartly one morning when the daily din was broken by a call from the Banning Sheriff's office. It wasn't an official call out but more like a request for Walt "Mr. Bad" and Kevin "Ace" Walker to check out an ELT signal at the Banning "International" Airport. An ELT is a little thingy that goes "beep-beep" on a certain frequency when a plane crashes and allows searchers to home in on this signal with special receivers which the team has. Occassionally these thingys go off when a hot dogger or stupid pilot makes a rough landing. So off trooped those intrepid members of the famous Riverside Urban Rescue Unit to find the elusive "beep-beeper".

After a couple of hours playing with the exotic electronic finder gadgets (ELT locators) and finding nothing but signals bouncing off every telephone pole and trash can in Banning the rest of the troopies were called. So out we went to find this downed "plane", always a grim task. Since this was an urban rescue, full use was made of the four-wheelers, owned by some four-wheelie type members, chasing down dirt roads to take bearings on the signal. The bearings indicated the signal was emanating from the airport or somewhere in the Banning "Bench" (a plateau above Banning). So while one team did a recheck of the airport, the four-wheelies combed the canyons and washes all with questionable results. At the airport (which had no errant beep-beeps beeping) different pilots reported a very strong signal emanating from one particular canyon. OK gang charge! Cows and chickens scattered as our RMRU 4-wheelies roared in for the kill. Once in the hot area, no signal, ZIP. Now what?

It was suggested that perhaps there was a remote possibility this turkey had crashed his "plane" in somebody's backyard unbenounced to all. So while the



RMRU PHOTO BY JIM FAIRCHILD

DOWNED HOUSE? - RMRU members Randy Iwasiuk, Walt Walker, Glenn Henderson, Rick Pohlers and Mel Krug look into a vacant house where they first felt an ELT (emergency locator transmitter) was going off. The ELT was found shortly after in a house up the street. To understand this photo completely, see the article by Rick Pohlers.

jeepers jeeped, the base campers moved out following spurious signals from trash cans to TV antennae. Mr. Bad couldn't have looked more heroic hanging out the truck window with a Star Wars antenna pointing the way, like Washington crossing the Potomac. Outta the way, dog. RMRU's coming through! "Woof."

We narrowed it down to one street in North Banning, near a canyon which came from the bench. The signal was so strong, it knocked our socks off, but we couldn't quite fine tune it. An abandoned house was searched thinking some insidious prankster had hidden it in there, but no results. Meanwhile the boys in blue (CAP) had showed up and with a couple of our men tried to sort out the signal while the rest of the team went on a wild goose chase led by the neighborhood urchins calling in the distance. Then bingo, pointing to a suspicious house one of the CAP guys asks the resident as he drove up if he owned an ELT. Why sure, doesn't everybody? HA, HA! found at last the crashed house. There it was on the window sill merrily broadcasting its distress signal having been set off by the little woman when she knocked it over while dusting. So we did it again folks, another mission accomplished, another life saved, well it would have been if the pilot had crashed his house in our mountains instead of his neighborhood.

• RMRU

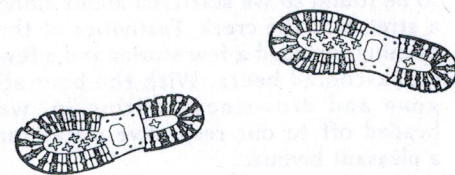
ABORT

Mission No. 8219A

**4 June, Fri.
Tahquitz Rock,
San Jacinto Mountains**

At 1000 hrs. we received a call from the Hemet office of the Riverside County Sheriff's Department that two climbers were stranded on Tahquitz Rock above Humber Park.

RMRU members responded to the parking lot at Humber Park. Members were met by Capt. Bill Park of the Hemet station. The Captain had arrived ahead of members and had been watching the two climbers with a pair of binoculars. They were stranded approximately half way up the Trough (one of the many climbing routes). As members were preparing equipment, another set of climbers on the rock heard the calls for help and moved onto the route and helped the couple down. Once the climbers were off the rock, RMRU members were released from the scene. • RMRU



ABORT

Mission No. 8220A

**4 June, Fri.
Black Mountain Group Camp,
San Jacinto Mountains**

As members were starting down from the Abort at Humber Park (8219A), members were recontacted by pager that an Idyllwild youth was missing from the Black Mountain Group Campground. But as members were driving in the dirt road to the camp, they were met by a woman who was driving the missing youth back to Idyllwild. It seems that the teen had wandered away from the camp and then made his way to Pinewood. After the deputy arrived and picked up the youth, members were once again released to go home. • RMRU

SEARCH

Mission No. 8221M

**18 June, Fri.
Lake Fulmor,
San Jacinto Mountains**

By Kevin Walker

During the mid-morning on a dark and overcast Friday, we received a call from the Banning office of the Riverside County Sheriff's Department that a three year old was missing from Lake Fulmor. I think that I can safely speak for all RMRU members that on any given mission we get there fairly fast, but when a little one is involved, we pull all the stops. In fact, while enroute to this particular mission, fellow member Craig Beasley was stopped by a CHP officer. But after telling the officer why he was going at a fast rate of speed, the officer sent Craig on his way.

RMRU members met, and base was set up at the Lake Fulmor parking lot. Ops Leader Walt Walker had fellow member John Dew and I start a search, for direction of travel from where the young one was last seen, as we were the first to arrive. While waiting for the rest of the team to arrive, Walt gathered information from the parents.

Information was as follows, Mark Ferrato, age three, and his parents from Rancho Cucamonga had come to Lake Fulmor for a day of fishing and picnicking up in the mountain sunshine. Mark was last seen near the water's edge playing with some ducks as his father fished nearby. This was 8:30, and it was now almost noon. Given the circumstances, we called and activated the Sierra Madre Search and Team's tracking bloodhounds, and asked the Sheriff to call in the underwater search and recovery team. The



RMRU PHOTO BY WALT WALKER

SAD ENDING — The body of young Mark Ferrato lies covered in the foreground after being found in Lake Fulmor. Members of the Riverside County Sheriff's Department and the volunteer Riverside County Search and Recovery team are shown completing the unhappy task.

Sheriff also called in a tracking dog team from the Redlands Police Dept.

In our initial search John and I were unable to find any prints leaving the area. We regrouped, and with more members on the scene, we started making perimeter searches around the lake. While this was going on Jim Fairchild and Joe Erickson searched across the highway and downstream from the lake. But again, no results. All the teams returned to base for reassignments. While Walt was working on new assignments, the Redlands P.D. search dogs arrived closely followed by the diving team. Walt then filled each team in, as to what their respective assignments were, and then got us foot troops back into the field. This time we started from the road, and then swept high across the densely brush covered slope that looked down onto the lake.

We had been out only 15 minutes when the call came over the radio that Mark's body had been found. Back at base we learned the grim news that the divers were just starting into the water when one of the divers in about 3 to 4 feet of water brushed up against the body. All morning one could not help but wonder if the mission would end that way, but yet you would hope that you were wrong and you would find something. A tragic story came to an end, and a somber group of volunteers headed home. • RMRU

RESCUE

Mission No. 8222M

**26 June, Sat.
Lower Jensen Canyon,
San Jacinto Mountains**

By Brian Hixson

It was a little before 10:00 in the morning when I was interrupted by Walt Walker with an invitation to go hiking. I grabbed my gear and drove over to Walt's where he was waiting by the No. 1 van. Close behind me was the other half of the Walker members, Kevin. With gear on board, we were enroute towards Cabazon and the mouth of Jensen Canyon.

Within 40 minutes we were at the large water tank above the community of Cabazon. There we were met by Captain Canova and Sgt. George Keaton from the Banning S.O. They told us that the California Division of Forestry volunteers had been notified that a sixteen year old Hemet girl had a rock fall on her right hand and it had nearly amputated two of her fingers. The accident had occurred in the morning. CDF rolled and also had called Howard ambulance, who sent two EMT's (Emergency Medical Technicians) to give medical aid to the injured girl. The captain had his scanner on while working around his home, and heard the CDF and the

ambulance being called out to Jensen Canyon. Knowing what the canyon was like, the captain in turn called RMRU.

The CDF crew and the ambulance personnel was up in the canyon with the girl when we arrived. Walt decided that since they were not too far in, we would go light so that we could get in quickly and be able to help in the carry out. So, with us we took light callout gear and the break-down litter. We hiked in approximately one half of a mile when we heard the group making their way down the bottom of the canyon in the creek. The group had not taken a litter in so they were walking the girl out. We could see that she was quite shocky and asked the ambulance personnel if we could place her in the litter and carry her the rest of the way out. The answer was yes. While John Dew and I put the litter together, Walt and Kevin examined Lisa's (the injured girl) hand. No first aid gear had been originally carried in and the only thing that protected Lisa's hand was some material that had been wrapped around it. With the help of the ambulance EMT's Walt put a Kling dressing over the material to help protect her hand better. With that done, Kevin and I tied Lisa in, and then with the help of CDF personnel (thanks), we carried Lisa out to the road head.

• RMRU

Editor's Note: Lisa was transported to Pass Hospital. Because of the seriousness of her injury, she was taken to Loma Linda Medical Center.

ABORT

Mission No. 8223A

**26 June, Sat.
Highway 243,
San Jacinto Mountains**

At approximately 1430 hrs. Saturday we received a call from the Banning office of the Riverside County Sheriff's Department that there had been an auto accident on the Banning-Idyllwild Highway involving several people still trapped in a car off the highway. Because of steep terrain, our technical services were thought to be needed.

As members were rolling to the scene, the team pager went off saying that CDF was able to handle the operation, and our services were no longer needed. After checking with the Banning station it was learned that the slope was not as steep as first reported, and fire-rescue personnel were able to get to the vehicle with little trouble. • RMRU

\$USTAINING MEMBERS

BY WALT WALKER

Once again we have combined the list of Sustaining Members into a single long list of RMRU supporters. This is being done both because we always seem to fall behind in the production of the newsletter and also because our mailing costs are less at the end of the year when we mail more than one issue at a time.

But that doesn't mean that we only think about you, the Sustaining Member, when we need money. We more often think about you when we are in the backcountry helping some in need. Why, because you have provided us with the means to purchase the equipment that gets the job **done!**

March

Renewing—

*Woman's Club of San Jacinto
Freeman C. Bovard
Jane and John Wieffels
James Larson

April

New—

Sheila McMahon

Renewing—

Nuvew School Science Camp Fund
Richard & Karin Greenwood
*Idyllwild Property Owners Assoc.
M/M R. L. Haglund
*Circle City Hospital
*Jane & John Wieffels

May

New—

Howard & Corinne Haering

Renewing—

*Jane & John Wieffels
Richard and Karin Greenwood
*Circle City Hospital
M/M Bert Leithold

June

New—

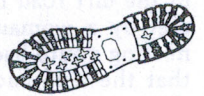
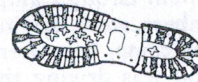
*Gregory F. Rzonca
Louise McGrath
Judith A. Caldwell
J. K. Riley
*Elizabeth L. Meeh
*Duane B. Haller
*Wallace W. Nichols
Rudolph T. Acosta
Bruce R. Dodd

Renewing—

Jerry & Cynthia Whitt
Harold & Dorothy Carlson
*M/M Kenneth L. Andrews
*Circle City Hospital
Jane & John Wieffels

Keldon Paper Co.
M/M H. Parker Markle
*James B. Fairchild
*Lawrence F. Bailey
John W. Murdock
Michael J. Daugherty
*Karolyn B. Stanovich
Barbara A. Brickman
*Thomas Dadson

***Century Club**, donation of \$100 or more



Ding BaT

of the month

by Kevin Walker



Here is yet another installment of our "who is it super hero series." Pseudo 'Superman' Bernie McIlvoy is seen here flying over a Deep Canyon pool looking for scum and low life. We are sorry though, Bernie's flying suit was at the cleaners.