

Volume XVII, Issue IX, September 1981 — Kevin Walker, Editor — Walt Walker, Publisher — Lisa Walker, Artist

## Search and Rescue

### RESCUE

Mission No. 8126M

6 Sept., Sun.  
Hawley Quarry,  
Rubidoux

By Kevin Walker

At 8:30 the pager went off and interrupted an exciting episode of CHiPs. The voice at the other end requested that RMRU members contact Jim Fairchild at home, for a rescue in the Rubidoux area.

Normally us folks out in the San Jacinto area are the first to arrive at missions in the San Jacinto's, but not this time. I gathered my gear and had my wife, Patrice, drop me off at the rescue garage to pick up the No. 1 van. Then after picking up Walt Walker at home, we headed in the opposite direction (from the mountain) to Riverside. Jim had the No. 2 van, and directed us into Hawley Quarry.

Jim had been there for about 20 minutes and had already gathered information. James Black and Jon Chaney had decided to go hiking in the quarry in the early evening. James was walking along a narrow ledge approximately 200 feet above the bottom of the quarry when the ledge gave out behind him and collapsed. James found himself in a tough spot. He could not go on any further, nor could he go back. His friend Jon then went back and contacted the Riverside Sheriff, who then contacted RMRU.

Jim said that he thought that we could lower someone down from above James, and then traverse over to him. So, we gathered up the necessary technical gear and hiked over (appr. ¼ mile) to where the operation would take place. After de-

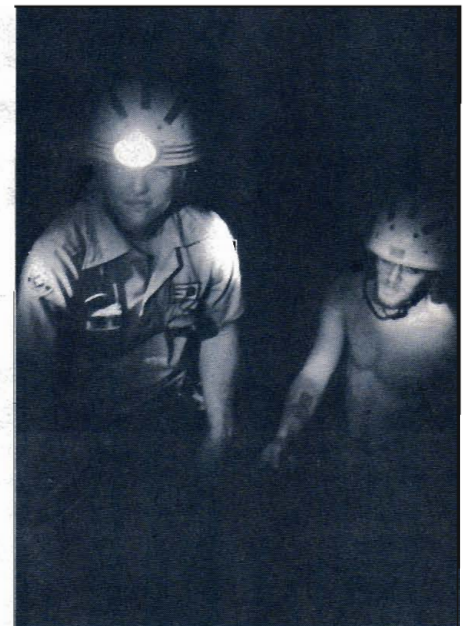


RMRU PHOTO BY JIM FAIRCHILD

**SAFETY CHECK** — RMRU member Walt Walker double checks to see that Kevin Walker is tied in correctly to the lowering system, before starting down the rock face to stranded James Black.

ciding where the best spot was, John Dew and Walt started setting up the main anchors (with snow pickets), and Jim and Bob Attridge set up the belay anchor. That left yours truly to be assigned to go over the side.

Once everything was set up and then re-checked (safety), I clipped into the rope. I was lowered about 75 feet to where I could traverse over to a very relieved James Black. While I put a sit harness and helmet on James (the rock fall hazard was extreme), the crew on top changed the system over to 3 to 1 mechanical advantage. With the system ready after a short wait, and James now tied into the rope just below me, we started across and then up the near vertical slope. Everything went smoothly except for a couple of near misses from hard ball size rocks that we dislodged as the rope slid along the slope. Shortly though, we reached the top. After getting James untied from the system, Bob walked James back to the road and his friends. The rest of us coiled rope and dug out some very stubborn pickets from the hard hillside. • RMRU



RMRU PHOTO BY JIM FAIRCHILD

**NEARING THE TOP** — RMRU member Kevin Walker and subject James Black hold on to the rope as they are pulled to the top of the rocky cliff.

## RESCUE

**Mission No. 8127M**

**7 Sept., Mon.  
Tahquitz Rock,  
San Jacinto Mountains**

*By Walt Walker*

It was 1530 hours Monday afternoon when the Hemet Station of the Riverside County Sheriff's Department called me and requested RMRU's assistance. It had been reported to the U.S. Forest Service that a climber had been struck by lightning while climbing Tahquitz Rock. It was also reported that he was unconscious.

With a report like that I requested the S.O. to call Don Landells and have him meet us in Idyllwild with one of his Jet Ranger helicopters. In record time, I had rushed home, changed clothes, loaded my gear and headed over to pick up the No. 1 van.

As I was driving towards Idyllwild I could see the lightning burst out of the dark clouds. It sent chills down my back as I remembered when two fellow RMRU members and I had been climbing North Palisade in the High Sierra, when we were caught on an exposed ridge during a lightning storm that was filled with bolts that struck all around us.

Mary Bowman and I set up base near the Camp Maranatha softball field as members were arriving. Don Landells radioed that he was only five minutes out. Jim Fairchild and I quickly moved over to the field. When Don landed I filled him in on the details as RMRU members removed the rear doors of the bird. Jim

and I climbed in the back, buckled up, and off we went towards the rock.

We flew directly to the area, near the summit of Tahquitz Rock, where the injured climber had been reported to be at. We circled the area a number of times then we circled the entire rock and



RMRU PHOTO BY JIM FAIRCHILD

**LILY ROCK** — More often, now called Tahquitz Rock, as seen from the helicopter. The arrow points to the approximate location where the stricken climber was reported to have been. The area is at the top of the north-east wall.



RMRU PHOTO BY JIM FAIRCHILD

**LOADING UP** — RMRU member Walt Walker (center) checks out the load chart with Don Landells (seated), as Idyllwild paramedic Larry Kent and John Dew look on.

searched the trail back to Humber Park. Don flew back to the field and we put the informant into the front seat and we took off again. The informant, Mike Draper, directed us to the area we had first searched. We radioed back to base and requested to have the S.O. contact all the nearby hospitals. Don headed back to the field and landed.

In about 20 minutes we received word that Samuel Roberts, Jr. was in the emergency room at the Hemet Valley Hospital. We later learned Mr. Roberts had been sitting on the rock when the lightning struck. He had received a ground current shock and was rendered unconscious. When he regained consciousness, other climbers had helped him off the rock and his climbing partners had drove him to the hospital. He was not seriously injured and was released that evening from the hospital. • RMRU

## RESCUE

**Mission No. 8128M**

**19 Sept., Sat.  
De Anza Cycle Park,  
Riverside County**

*By Rick Pohlers*

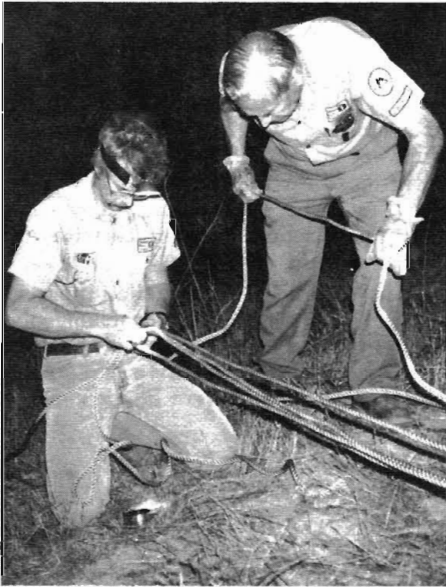
Things have been pretty slow this summer and as a result we have taken to doing urban rescues in areas around Riverside and Corona. So when we got a call to rescue an injured motorcyclist in De Anza Cycle Park, it was about par for the course. Maybe we should call ourselves Riverside Urban Rescue Unit (RURU).

Anyway, the problem was that a biker had made a wrong turn and found himself airborne over a three hundred foot dirt cliff. Guess he made a rough landing, what with broken bones and internal injuries, but at least he survived. The CDF and paramedics were summoned and quickly got things under control, however there was no way to wheel a gurny up, around or through the loose dirt and rocky cliff. So... that is when RMRU was called to the rescue.

Jim Fairchild got there first with the number two van along with his daughter, Carol. They began setting up for a raise while waiting for the rest of the team. Since the "A" team was out of town on vacation it was up to the "B" team to pull this one off.

"Ace" rock climber Joe "Little Piggy" Erickson was next to arrive and was appointed to go over the side. Other "B" team members dribbled in and assisted in setting things up. Someone had called the Riverside Air Force to shed some light on the project which they did but not without a lot of noise. Once Joe was lowered over the side we set up the mechanical advantage and recruited volun-

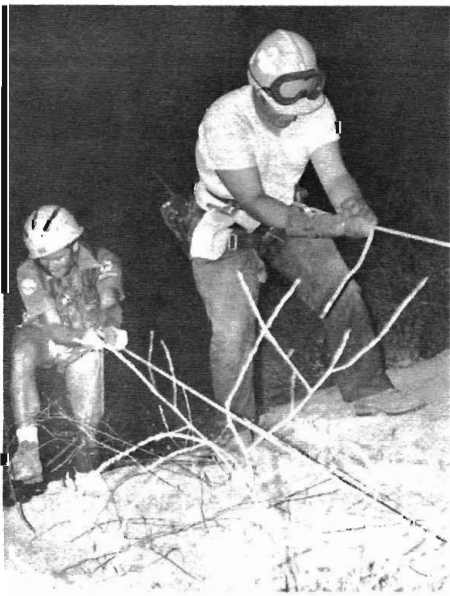




RMRU PHOTO BY JIM FAIRCHILD

**MECHANICAL ADVANTAGE —**  
RMRU members Rick Pohlers and John Dew set up a M.A. to raise the injured biker and attendant, Joe Erickson, up the near 300 foot dirt cliff.

teers to man it from the many CDF and bikers about. The cyclists were a willing lot ready to lend a hand, one hand one the rope and the other on a can of brewski. Meanwhile Joe got the subject buckled up in the litter and put helmets on the crowd that had gone down to the poor guy, including his mother. There were six other people in addition to the victim to be hauled up. Gee, whatever happened to that power winch we have?



RMRU PHOTO BY JIM FAIRCHILD

**UP-UP AND AWAY —** RMRU member Joe Erickson Jumars up, while the last of the C.D.F. volunteers is hauled up the dirt cliff in the DeAnza Cycle Park.

Rock fall was a big problem but Joe managed to dodge most of them. Seems everyone down there was hanging on to the litter for dear life as we hauled it up, (I thought it seemed a really rough pull for only two people) until they got to an overhang. There we quickly popped Joe and the patient up to waiting ambulance and fire people. Sounds real easy, but what a grunt for brewski swilling bikers pulling on the haul line. Bless their little dirt hearts, without them the "B" team would have been hard pressed. So that left a herd of folks to be lifted up still. About that time Walt "Mr. Bad" Walker shows up along with his lovely wife in their "Sunday-go-to-meeting clothes." He definitely wins the best dressed rescue person award. "Don't get your clothes dirty Walter", she said, as he ambled off slipping and sliding in the loose dirt and rock amongst dirty, smelly bikers and rescuers. What a sight! Of course there was Joe in his red swim trunks and Jim with his T-shirt on backwards. Yes siree, real professional looking bunch here.

Under "Mr. Bad's" gruff orders, between snickers, we somehow managed to get the rest of the folks up and wind this spine-tingling mission up. I bet ole "Walter" got it from "Mrs. Bad" when he got home. Those nice shining shoes and fancy duds got a little dirty out there. And he's the guy that says to be prepared to hike when we show up at a mission. Well it's the "A" team's turn next time.

• RMRU

## SEARCH

**Mission No. 8129M**

**30 Sept., Wed.  
Tahquitz Canyon,  
San Jacinto Mountains**

*By Craig Beasley*

There I was, sitting at my desk drawing up some geologic maps when ring...! I picked up the phone and heard the increasingly familiar "Hi Craig, this is Mary (McIlvoy). You have a mission — can you go?" Having told her yes, she informed me the plan was to meet at the Banning substation at 5:00 a.m. to begin searching for an overdue male youth in the infamous Tahquitz Canyon. Five o'clock would come awfully early, so geology would have to wait till some other day.

RMRU assembled at 5:00 a.m. at the substation and rolled to Ann Dolley's (our usual helispot for Tahquitz Canyon missions) to meet Don Landells at 6:00 a.m. We split into three search teams, Bernie McIlvoy and Craig Britton, Kevin Walker and Rick Pohlers, and Bob Attridge, Mark Rhoads and myself to cover the lower, middle and upper portions of the canyon, respectively. Don arrived on

schedule as usual and deposited the teams in the appropriate places.

The assignment for each team was to search down canyon attempting to cut tracks of the overdue teenager. With all teams down in the canyon, radio communication was marginal so Don flew Walt Walker to a high point on the ridge to act as radio relay between the field teams and base. A few prospective tracks were turned, none of which yielded a concrete lead. While approaching the ends of our assignments, the Sheriff was notified that a boy fitting the description of our subject had been seen in Palm Springs earlier that morning. We continued our assignments and having turned nothing, coupled with the earlier sighting of the boy decided our job was done and we headed for Carrow's in Banning for lunch.

A special note for those who have known and appreciated Tahquitz Canyon for years past — it is no longer the same. Due to the absence of ground cover because of last year's fire, the ground essentially let loose in this month's (September 7th) intense rains. A torrent with incredible force must have ravaged the canyon to cause the radical changes that have occurred. Boulders six feet in diameter are piled where there were none, twenty foot tall trees are now horizontal, and perhaps the most devastating change, RMRU's favorite swimming and diving pool has been reduced to a four inch deep trickle as the pool has completely filled with sand. The large flat rock we camp on during our annual Tahquitz Canyon training is covered with large boulders and our shade tree rests upon the rocks. It was quite disheartening to say the least to find that the ascent out of the canyon prior to arrival at the camp site is no longer necessary as it is now merely a short jump into a large sandbox that used to be the best swimming hole in the canyon. All we can do is hope for a good winter that will produce a run off strong enough to clean the sand from all the pools and return our favorite spot to its well remembered condition. • RMRU

## Notice!

The **RMRU Newsletter** is published 12 times per year by the Riverside Mountain Rescue Unit, Inc. It is intended primarily to inform the Regular and Sustaining Members.

If you would like to receive the newsletter on a regular basis, and at the same time become a Sustaining member, send your tax deductible donation of \$25 or more to:

Riverside Mountain Rescue Unit  
Post Office Box 5444  
Riverside, California 92517

# Training

## Triage and First-Aid

**12 Sept., Sat.  
Boulder Basin Campground,  
San Jacinto Mountains**

*By John Dew*

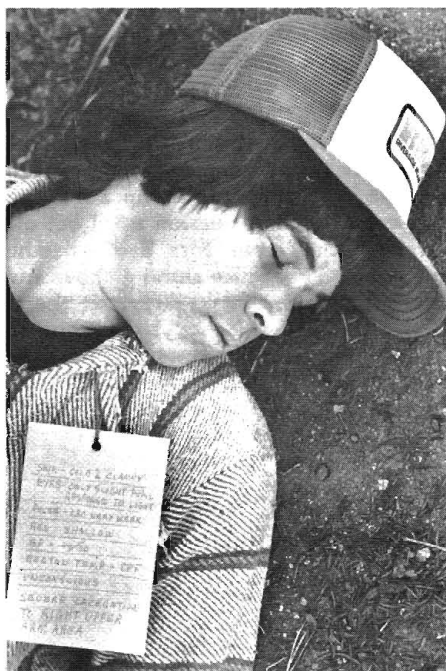
It was still the middle of the night when the alarm clock started its familiar noise. This is always a shock to the system, to have to get up for work, but when it happens on Saturday, that is exceptionally shattering. However, training for RMRU is important so we made ultimate effort and forced ourselves out of a nice cosy bed to go mountain climbing and play games.

Training in September was to be a mock plane crash where people were injured.

Upon arriving at Boulder Basin Campground on Black Mountain we were told that no one had arrived at the crash scene as yet, but the E.L.T. (the distress

signal of downed aircraft) was coming from "that-a-way", pointing in a northerly direction.

Teams were formed and started searching in the general area indicated. After some search time had lapsed one team radioed to "base" that they had spotted the downed craft. It was a small plane with two persons still inside (team member Mary Bowman's daughters, Susan and Nancy). These "victims" were injured seriously. The newer members were to do an assessment and first aid on them and try to determine if any other persons were present while the veteran members took a less prominent roll and watched the newer members work. Later constructive suggestions could be passed along concerning possible improvement in technique.



RMRU PHOTO BY JIM FAIRCHILD

**FATAL INJURIES** — Mock patient Roy Dew (son of RMRU member John Dew) lays unconscious several hundred feet below the wreckage.

While these were being treated it was determined that there was a third person aboard the ill-fated craft who had wandered away due to severe injuries he had sustained. This subject (Roy Dew) was in more critical condition than the others and in spite of all effort he just "didn't make it." Where upon his demise he was taken from the litter (and had to walk the rest of the way out) so it could be used for one of the female subjects who could benefit by being "rushed to the hospital by a waiting ambulance."

This exercise complete, we sat to lunch together where we enjoyed the company of Jerry Niswonger, the doctor on the team who was working with us for the

last time before leaving to open his own practice in Paradise, California.

After lunch the team set up a problem where the newer members created the problem and watched the veterans in their speedy and altogether perfect way solve it. Again the "fallen climber" (Roy Dew) was placed in an almost impossible position in a hole in the rock with tremendous injuries.

After looking at the situation the fearless veterans attacked the problem, solved it in record time, and still had time for an hour of fun before we all mounted our trusty cars and went home. • RMRU

## Besides a Bloodhound...



**... what has very sad eyes? ANSWER BELOW**



RMRU PHOTO BY JIM FAIRCHILD

**MOCK CRASH SITE** — RMRU members Craig Britton and Larry Roland give first aid to injured subjects, Nancy and Susan Bowman (daughters of RMRU member Mary Bowman) as Operations Leader Joe Erickson looks on.

An old member who has just been assigned to hike to Caramba.