

Volume XVI, Issue VIII, August 1980 — Kevin Walker, Editor — Walt Walker, Publisher — Dona Towell, Artist



Pancake Breakfast

17 Aug., Sun.
Idyllwild Town Hall

Once again, the Izzak Walton League, Idyllwild Chapter, performed their magic. The trick is to put on a good morning meal, which consists of pancakes (with some very secret ingredients), eggs cooked to order, sausage links, juice and your choice of milk or coffee.

If you attended that fine morning, you know how it turned out. Great would not be overemphasizing it. For RMRU, it is really an enjoyable task to help serve the breakfast. Jim Garvey and Kevin Walker were putting on a masterful display of pancake flipper. Hank Schmel was at the helm of the egg griddle. The sausage duo of John Dew and Hal Fulkman were really dishing it out, (sausage links, that is). And then of course, there is all the rest of the group who cleans up tables and serves beverages.

It also is quite a family affair for RMRU. Case in point. Pete Carlson and son Dustin. Dustin has been to every breakfast with his proud father since before he was a year old. All in all it was a very enjoyable morning. As of this writing the final report on how much money was made is not in, but that day over 300 meals were served. And that is a pretty good figure report at this time. Also, we of RMRU are privileged to say thank you to the Izzak Walton League for the 11th straight year.

• RMRU



RMRU PHOTO BY JIM FAIRCHILD

SIX YEAR VETERAN AT FIVE — Dustin Carlson (center) has something of a record going. He has attended six consecutive pancake breakfasts, and he is *only* five years old. In this photo Dustin, with his proud father Pete Carlson and friend Connie, look at the RMRU photo albums.

Search and Rescue

SEARCH

Mission No. 8036M

2 Aug., Sat.
Near Suicide Rock,
San Jacinto Mountains

By Kevin Walker

Just as my dad Walt Walker and I were completing an educational program for a group of Boy Scouts from England at Camp Emerson, the camp ranger asked for Walt, and said that team member and Idyllwild resident Mary Bowman was on

the phone with a possible rescue. After talking with Mary we decided to drive on up to Humber Park and just see what was going on. When Walt and I arrived we were met by a deputy and a local resident. The gentleman told us that he and his neighbor had heard calls for help up on Suicide Rock. Another catch was, earlier in the evening, a woman separated from her group as they were returning from the rock. The group went back up to look for her, and while they were in looking, the young woman made her way back to Idyllwild. Anyway, Walt and I decided to hike in and find out if the calls for help were coming from the group of climbers who went back in.

We had no sooner crossed Strawberry Creek when we came across the group returning to Humber. We informed them that the woman from their party had hiked down into Idyllwild. And after asking a few questions, we found that the group had been calling out Hello... Hello. And to the residents below it sounded like Help... Help. • RMRU

\$USTAINING MEMBERS

See the September Issue

SEARCH

Mission No. 8037M

**3-4 Aug., Sun.-Mon.
Banning Airport,
Banning, California**

By Kevin Walker

I was just sitting down to homemade apple pie with some close friends when we were interrupted by the telephone. Sure enough it was Walt Walker with news of an ELT (emergency locator transmitter) going off in the Banning area. I stopped and picked up the No. 1 van and then picked up Walt and headed for the Banning Sheriff's office. On the way Walt told me that earlier in the evening a pilot flying through the Banning pass reported an ELT going off in the vicinity of the Banning Airport. Fellow team member John Dew and his son Roy were already at the Banning Station when we arrived. Walt decided to see if we could pick up a signal from the parking lot there, so we went ahead and set up the teams DF (direction finding) equipment. Sure enough the signal was coming from the airport. So we all drove over to the airport to start checking to make sure that it was a plane on the airport and not one up in the rugged hills near the airport.

To make a long story short. After spending nearly two hours chasing signals all over the place, Walt decided to set his DF equipment at a very low sensitivity. He then started walking up and down the flight lines. On his third row of aircraft, just as he passed a twin engine Apache, his equipment went off with the strange sounding wail. Sure enough, after getting the pilot's window open, and then reaching around to the ELT and turning the switch, the sound quit. Apparently the ELT was accidentally turned on that day while the pilot was servicing his aircraft. So much for the ELT. We did learn an important lesson, though, an ELT signal will go in many directions when near metal buildings, such as aircraft hangers. What a fun way to spend a Sunday evening. • RMRU

SEARCH

Mission No. 8038A

**4 Aug., Mon.
Idyllwild,
San Jacinto Mountains**

We received a call from the Hemet office of the Riverside County Sheriff's Department that a seven year old had wandered away from his home in Idyllwild, and had not returned. The team was just rolling into Idyllwild when deputy radioed to the rescue van that the youth had returned home, and was in good con-

dition. The rest of the members were then notified by pager that the mission was cancelled. • RMRU

SEARCH

Mission No. 8039M

**18 Aug., Mon.
Apple Canyon,
San Jacinto Mountains**

By John Dew

One of the most uncertain things about search and rescue work is, "when is the call coming?" This question was answered for us one morning at just about daybreak.

We were informed that a car had gone over the side in Apple Canyon, (which is near Lake Hemet) and the driver was nowhere to be found. This didn't sound too strange because if there was no injury a driver might walk away. Then we were told that the driver was a woman, her husband had found the car, and her shoes were in the car. This caused us some concern. The brush was thick, the hills rocky and fairly steep, and when we arrived we were unable to find good tracks either in the brush or on the road.

Several other search units had been called in to work on the search. Some were closer and had arrived before most of RMRU. It was determined that the Hemet members would search the road edges for long distances each way. RMRU would take the brush both up hill and down to try to cut tracks. One Hemet jeep would stay at a junction about a half mile down the road around the bend to interrogate persons who might be traveling that way.

Just as each assignment was being carried out and people were getting in their places a bare-foot woman came walking towards the junction where the Hemet jeep was stationed. It was quickly determined that indeed this was the one for whom we were searching. She had been somewhat dazed by the accident and had been wandering around most of the night. Upon seeing all the activity the next morning had walked toward it, thus completing another mission with the subject fareing no worse than sore feet and a few scratches. • RMRU



RESCUE

Mission No. 8040M

**20 Aug., Wed.
Base of Tahquitz Rock,
San Jacinto Mountains**

By Kevin Walker

It was shortly after the lunch hour when I received a call from RMRU member Bernie McIlvoy. Bernie informed me that team coordinator Al Andrews was out of town on business, and of course he was not calling just to tell me that. His message was short. A climber had fallen about 50 feet to the base of Tahquitz Rock and was seriously injured. With that I told Bernie I would get the No. 1 van and get up there as quickly as possible.

Luckily traffic was in my favor, and within 45 minutes I arrived at Humber Park. Base Camp Operator Mary Bowman, who is a resident of Idyllwild, was already on the scene gathering information. Also there was Deputy Glen "Mac" MacWilliams from the Sheriff's Department and Jerry Stuart from the Idyllwild Fire Department. Mary told me that the IFD had been called in also, and that one of their paramedics had hiked in to give aid. I then asked Jerry what gear had been carried in. The paramedic along with some of the climbers had gone in with first aid equipment and a Stokes litter. Just as I was departing base camp the IFD paramedic radioed down that they had the patient in the litter and had started down. He also said that they would not need any further assistance. Mac and I took one look at each other, nothing was said and with that I started hiking. For about ten minutes I hiked along Lily Creek making my way up stream. I then turned toward the South and started working towards the rock. Within another five minutes I made voice contact with the group, and soon after, was with the party. I could see that the group was having a rough time in making their way down through the large boulders and brush below Tahquitz Rock. I persuaded the group to wait until more help arrived. We were soon joined by Hal Fulkman, and not long after that Jim Fairchild and Carol Cook arrived with the "wheel." Once the wheel was placed under the Stokes, we were able to move much quicker around and over the obstacles, and with considerably less discomfort for the unfortunate climber. And then with the added help of RMRU member Joe Erickson (with new orange shirt) we made our way back to Humber, and the waiting ambulance.

Later that evening, Hal and I went into the Hemet Valley Hospital Emergency Room to check on our injured friend. He did not have any fractures, but had suffered a concussion, and had multiple abrasions about the head, arms and legs.

• RMRU



RMRU PHOTO BY JIM FAIRCHILD

CARRY OUT — RMRU members Hal Fulkman and Kevin Walker (back of litter) and Joe Erickson on the walking belay, guide the wheeled litter back to Humber Park with assistance from the Idyllwild Fire Department



RMRU PHOTO BY JIM FAIRCHILD

DOCTOR ON THE ROCK — Team physician Jerry Niswonger takes his turn at being the litter attendant while being raised up the rock face by a mechanical advantage system.

TRAINING

Technical Rescue Skills

**9 Aug., Sat.
Suicide Rock,
San Jacinto Mountains**

By Walt Walker

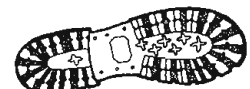
For more years than I would really like to remember, we have met at Norm and Maggie Mellor's Sky Yacht, for the annual technical rock training. At the previous regular meeting, the training chairman Hal Fulkman, had warned everyone that members arriving after 7:30 a.m. would find heavy loads of equipment waiting for them.

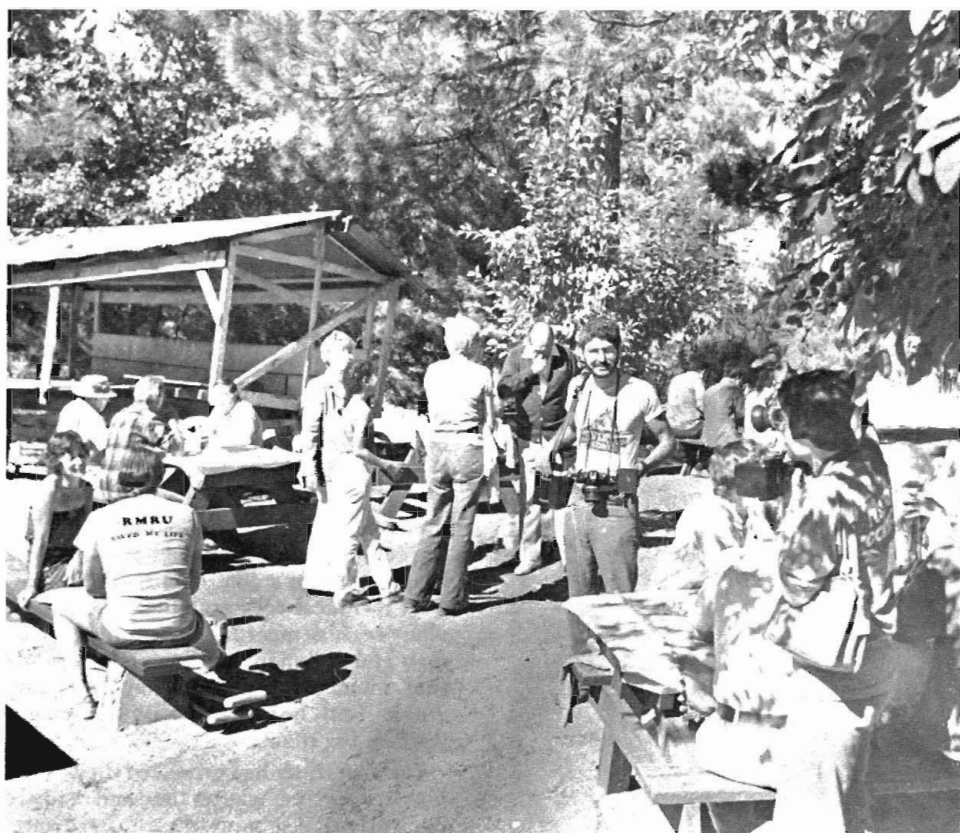
Hal's warning had produced the desired result, everyone was on time and ready to go. The usual mound of rope, hardware, radios and the wheeled litter were soon distributed. We swung on our packs, crossed Strawberry Creek and started up towards Suicide Rock. It was already warm and very humid.

When we arrived at our usual training area on the north side of the rock we split into two groups. One group hiked around to the top and began to set up for a multi-pitch lower. The other group began to practice personal skills and also work on technical rigging systems.

The first group completed the lower in good time and hiked back around to the training area. We stopped for lunch and during the break veterans regaled newer members with stories of trainings from out of the past. After lunch we continued to work on personal skills and began working on litter raising and lowering systems. By early afternoon everyone was ready to head back down the hill.

When we arrived back at the Sky Yacht, Norm had cold beer and soda pop ready, while the wives and girlfriends had dips and chips set out on the steps. After about an hour of cooling down, the barbecues were started. While the gals set out the salads, the guys cooked the steaks. The whole group assembled on Norm and Maggie's magnificent balcony, that overlooks Strawberry Creek, for dinner and an evening of very good fellowship. •RMRU





RMRU PHOTO BY JIM FAIRCHILD

THANKS LLOYD — Everyone from RMRU was pleasantly surprised to see Lloyd Allen in a full leg cast, attend the pancake breakfast. Lloyd was rescued back in March after he fell over 200 feet in an ice chute off the Devil Slide Trail. Lloyd is the gentleman on the left with the T-shirt reading, "RMRU Saved by Life".



Coming Events-

SEPTEMBER

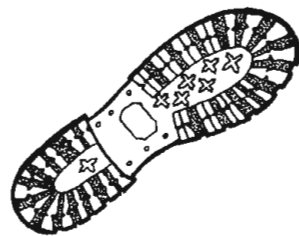
- 3 — Regular Meeting
- 6-7 — Training
- 17 — Board Meeting

OCTOBER

- 1 — Regular Meeting
- 4-5 — Training
- 22 — Board Meeting

NOVEMBER

- 5 — Regular Meeting
- 8-9 — Training
- 19 — Board Meeting



from Old'en Days

by Walt Walker

Ten years ago— Moving Day!

The old and the new were parked in Al Andrews driveway and the most enjoyable job, transferring the equipment and radios began.

(L to R) Don Ricker with back to the camera, Jim Fairchild checking a first aid pack and Walt Walker (asleep) carrying a coil of rope.

The photo at the left and the above text is reprinted from the Page 3, Volume VI, Issue 8, August 1970 of the RMRU Newsletter. • RMRU