

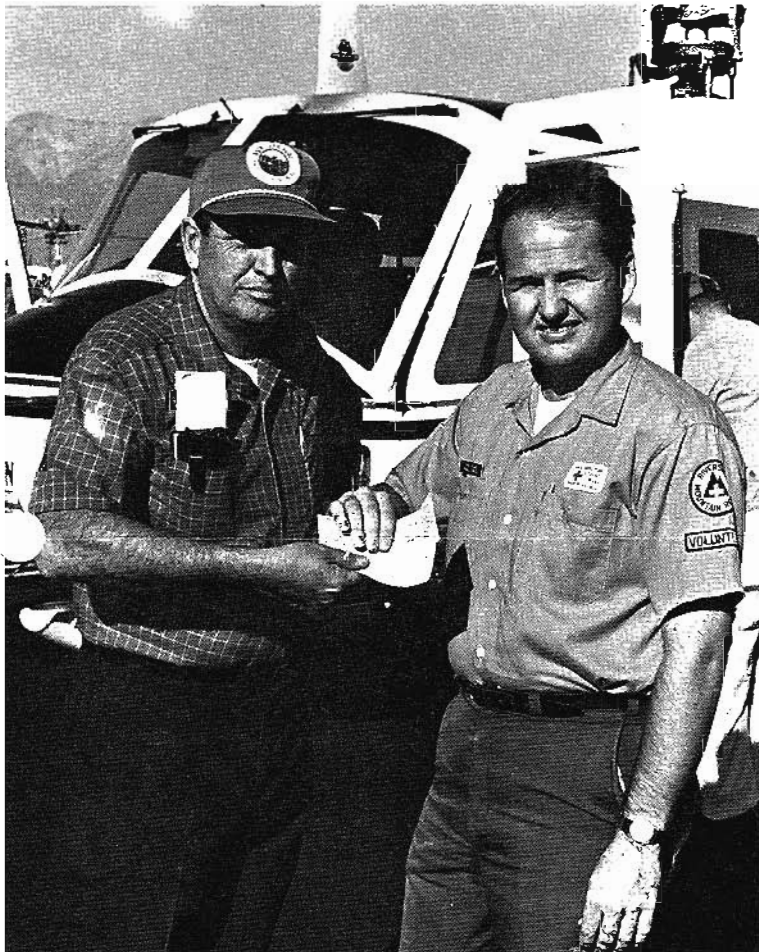
RMRU NEWSLETTER

PUBLISHED MONTHLY BY THE RIVERSIDE MOUNTAIN RESCUE UNIT, INC.
A VOLUNTEER NON-PROFIT CORPORATION

MEMBER OF THE MOUNTAIN RESCUE ASSOCIATION

Volume VII, Issue 1, January 1970
Jim Fairchild, Editor
Walt Walker, Photo Ed & Pub.
Bill Speck, Photographer
Contributions by members

1969 ENDS WITH HELITAC



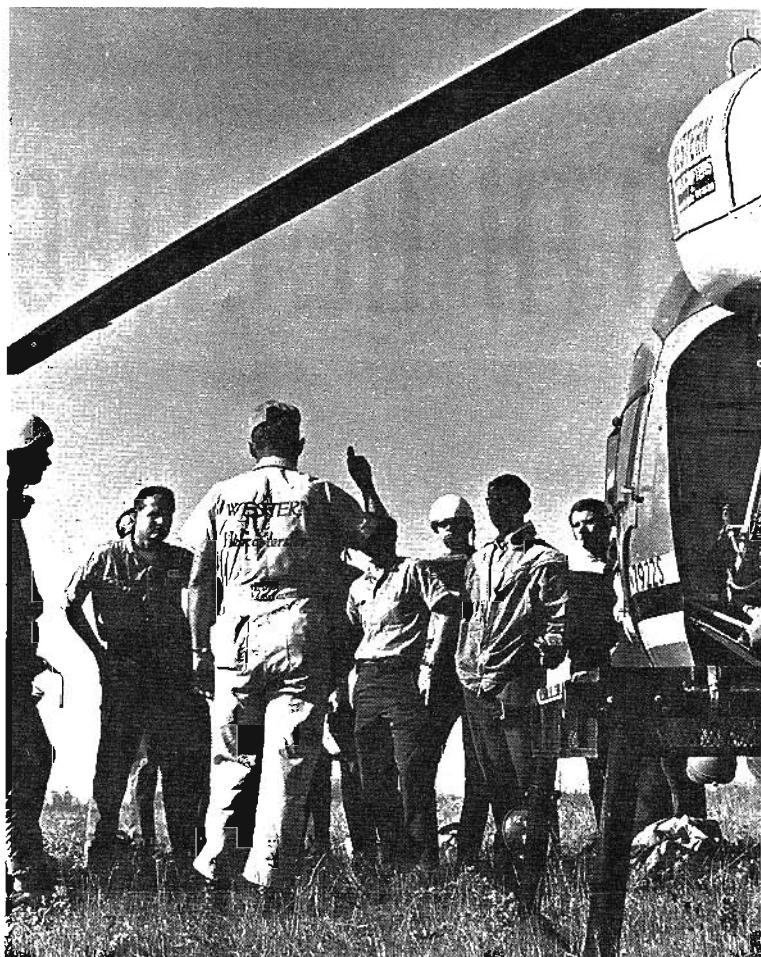
Left: Alec Ferguson, president of Western Helicopters, Inc., presents checks to Walter Walker, RMRU president, from Western and Mr. & Mrs. Ferguson. The donation was a memorial to Don Hardenberg, former Western pilot.

Above: Westerns' new \$465,000.00 Bell 205 jet helicopter lands at Miro Field after flight with RMRU members.



Saturday, December 13, 1969 was a red letter day for RMRU. It was made possible by Alec Ferguson of Western Helicopters, Inc. Mr. Ferguson believes in mountain rescue and RMRU. He once again demonstrated this belief by providing helicopters and pilots so that RMRU members could train in Helitac procedures. As RMRU members arrived at Westerns' base of operations he invited them in for coffee and donuts.

Mr. Ferguson then introduced us to some of his pilots and staff. They then explained to us the finer points of the Bell 205. The 205 was fired up and the first load of members was on its way to Lytle Creek. On the way they were flown over Loma Linda Hospital's new 7th story heliport. Shortly a second group of members were on the same run. The 205 is a tremendous machine and it is great to know that it is available if we should ever need it.



After flying in the 14 passenger 205 the 3 place supercharged Bell seemed small. However, it is still the workhorse in mountain rescue operations. With eight new members to be trained in Helitac procedure, it was a very busy day. The training progressed well and it would have been a perfect day except for a mishap near the end.

Ed Hill, one of the new members was making a jump while the chopper was about five feet above the ground and moving forward. As Ed was executing his PLF (parachute landing fall, sort of a tumbling roll) he had an elbow away from his torso and it struck the ground rather hard. He was taken to the Loma Linda Hospital and the x-ray revealed a badly fractured arm. Before sunset Ed was in the operating room having his left radius pinned. The prognosis is that he should regain full use of the arm.

As far as search and rescue was concerned December was rather quiet as it usually is. We rolled to Camp Lawler in the San Jacinto Mountains on the 22nd and as we were preparing to move into the field the 12 year old girl walked into camp. Christmas Eve while I was eating dinner I received a call that a young man was overdue from a solo hike. As I prepared to call out the team I was notified that he had returned safely.

The year, 1969, was very busy for RMRU as we participated in 28 missions and also had 8 aborts. We are proud to state that 10 lost people were found, 20 people were rescued and six lives were saved by our actions. We also had the grim job of recovering the body of a young man who had fallen to his death and

moving 8 bodies from two airplane crashes. We also presented mountain safety programs to 1648 people.

During 1969 members participated with volunteer hours as per the following: Meetings, 932 hours; Training, 1702 hours; Programs, 294 hours; Search and Rescue, 3442 hours. In case you did not add the preceding, it totals up to 6,370 hours. We of RMRU are proud to have participated. - Pres. Walt

COMING EVENTS ---

14 January, Board Meeting, 1930 at Bill Speck's home. All RMRU wives are invited to meet at the same time and place with Mary Speck to start plans for the spring rummage sale.

21 January, Rubidoux technical practice, be at 9th & Loring at 1900, drive up the gate is open. If rainy, we'll meet at Jim's place for indoor practice.

28 January, Regular Meeting, 1900 at Highland Outfitters. The evening's highlight should be Dr. Mellor's instruction on how to give various types of hypodermic injections. IMPORTANT! All members who've not been on a winter training trip please bring their full winter packs to this meeting.

30-31 January, Training on San Jacinto Mountain. We will take the tram up to Long Valley and snowshoe in someplace for a camp. This is a fine opportunity for the newer members to "shakedown" equipment and techniques for snow camping and travel. Last year's trip was not only good practice but a scenic marvel. Remember the November familiarization trip? Things (terrain & vegetation) sure look different under snow. Full details and plans at the meeting.



The Road Runner sez-

What's this? Hypodermic injection practice? The Road runner just showed his true feathers -- chicken!

Well, 1969 is history, and for RMRU a most active and successful year. We most sincerely hope that we can meet the unexpected challenges we will undoubtedly

encounter during the year ahead. People lost or injured in the wilderness will present us with sudden missions. We will be successful in helping if we maintain and improve our skills, maintain or attain excellent physical condition, and, roll immediately on every mission when called. One way to get a true perspective on our participation in SAR is to pretend we have a broken leg at 13,500' on Mt. Russell during a solo climb, then think what we would like our fellow RMRU members to do. Scary, isn't it? -Jim

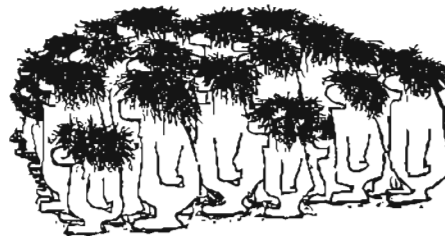
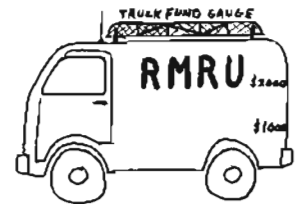
SUSTAINING MEMBERSHIP

The second year of the Sustaining Membership has drawn to a close. Thanks to 65 new members, the total membership is now 137. During 1969, 19 of the 1968 members renewed their memberships. The sustaining members should be very proud for making it possible for us to purchase 2 additional 5-watt radios--\$1,510, and a 110-watt base radio for our truck --\$775. We also have most of the funds needed for the last radio of our net. These radios have been tremendously effective in our life-saving endeavors. We were also able to purchase 600' of Goldline climbing rope and several new brush cutting tools. The following people have helped to continue our progress with their donations: Mr. & Mrs. Alexander



Fergusson, Western Helicopters, Inc., Mr. & Mrs. Ray Lavender, Mr. & Mrs. Irv Hall and Mesa Verde P.T.A. A special thanks to the following people for renewing their memberships: Mr. & Mrs. Ralph Ridenour, Mr. & Mrs. David Harrah, Mrs. Laura Hamman, Mr. & Mrs. George Shipway, and the Hemacinto Lions Club.....
THANK YOU ALL.

During 1970 it is our sincere hope that by some means a new vehicle can be acquired. Most of the donations received during the month of December were placed in the truck fund by request. The fund now stands at \$480 plus the 1963 Jeep Pick-up as a trade-in. We also hope that each of our sustaining members will be able to continue their support in 1970 as they so generously did this year. We of RMRU would again like to thank each and every one of you for making it possible for us to "help our fellow man in a time of need" in a more efficient and professional way. -Al



"ALL RIGHT YOU'SE GUYS, 'THINK SNOW' OR ITS OFF TO CARAMBA"